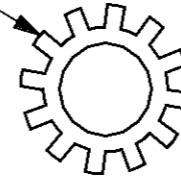


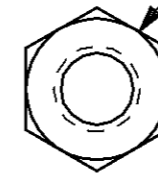
THIS DRAWING IS UNPUBLISHED. RELEASED FOR PUBLICATION, 19
 © COPYRIGHT 19 BY AMP INCORPORATED. ALL INTERNATIONAL RIGHTS RESERVED.

LOC	DIST	P	F	REVISIONS				
				ZONE	LTR	DESCRIPTION	DATE	APPD
BD	36				W	REDRAWN & REV ECN BD5517	09/30/91	-
					Y	OBSOLETE -10 PER EC 0020-492-95	25 OCT 95	GS

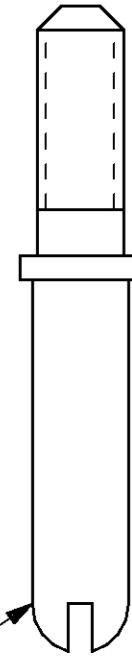
LOCKWASHER
STAINLESS STEEL



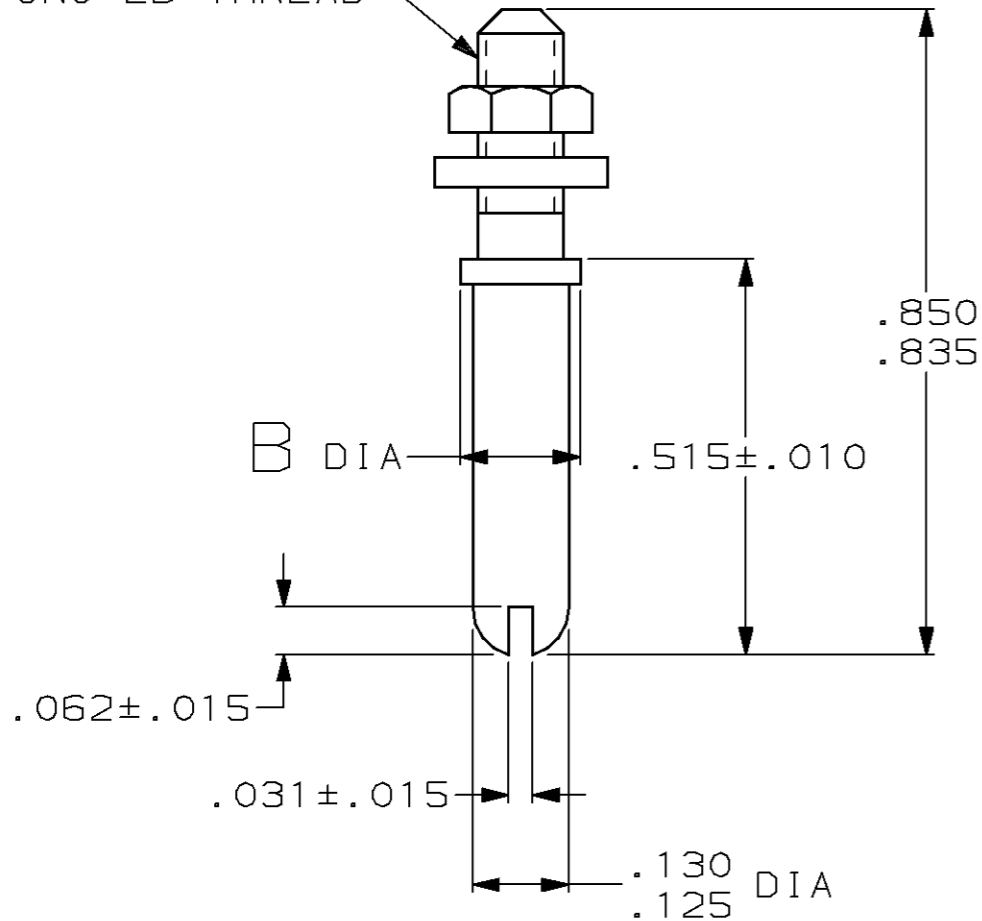
4-40 UNC-2B NUT
STAINLESS STEEL



GUIDE PIN
STAINLESS STEEL



4-40 UNC-2B THREAD



ASSEMBLED VIEW

OBSOLETE	.171-.176	1-200389-0
	.156	200389-2
	B	PART NO

DO NOT SCALE PRINT. UNLESS SPECIFIED DIMENSIONS IN INCHES TOLERANCES ON: 2 PLC DEC ± - 3 PLC DEC ± .005 ANGLES ± -	DR 09/30/91 L.SIPE	AMP AMP Incorporated Harrisburg, PA 17105-3608
	CHK 11/06/91 R.STONE	
MATERIAL SEE CALLOUTS	APPD 11/06/91 S.COYLE	NAME KIT, UNASSEMBLED, GUIDE PIN, M SERIES
	APPD - PRODUCT SPEC -	SIZE B CAGE CODE 00779 DRAWING NO 200389
FINISH -	APPLICATION SPEC -	SCALE 4:1 SHEET 1 OF 1
	WEIGHT -	